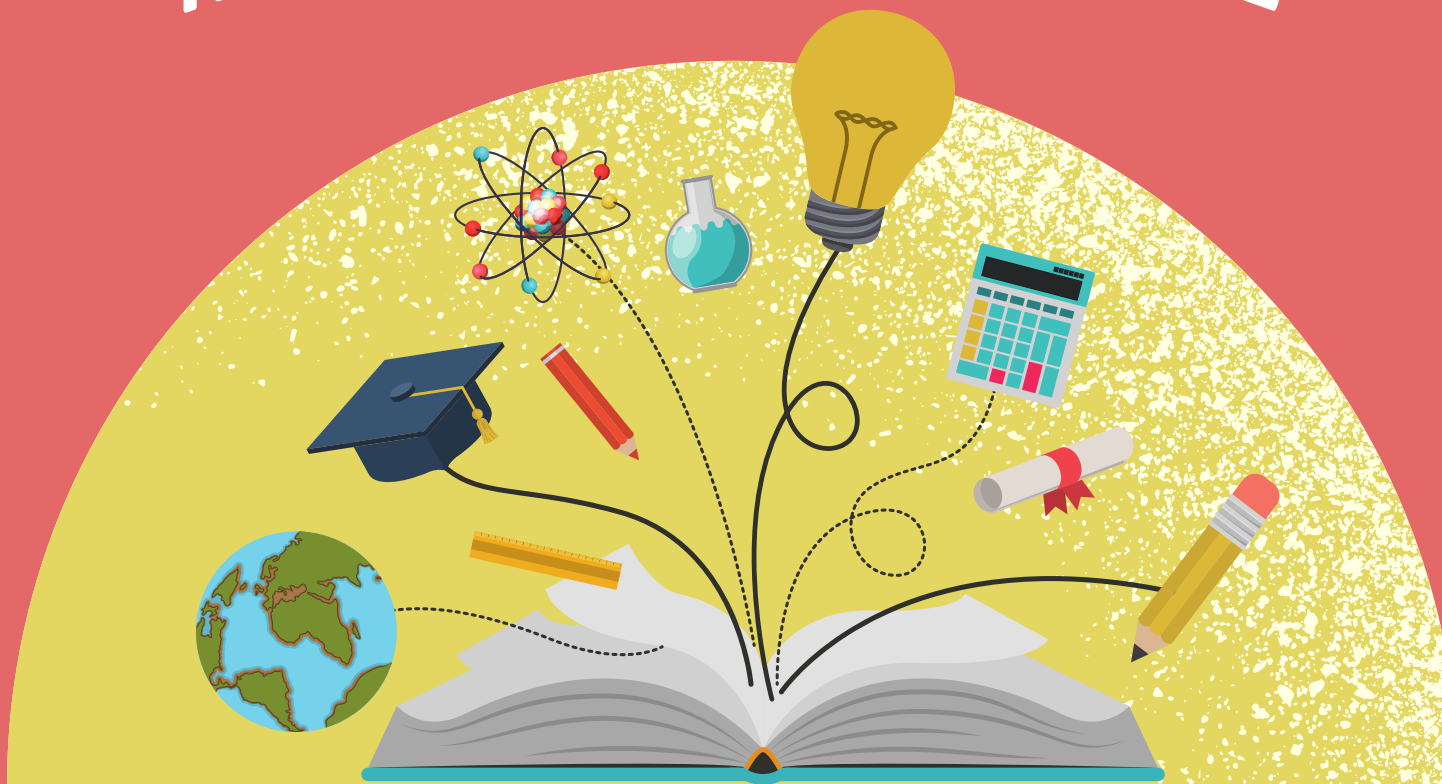


FURTHER EDUCATION

A GUIDE FOR YOUNG PEOPLE



FURTHER EDUCATION

WHAT IS FE?

Further Education (FE) is any education between school level and university level. Learning at university level or above is called Higher Education (HE).

BENEFITS OF FE...

- **EXPLORE NEW SUBJECTS & COURSES**
- **MEET LOTS OF NEW YOUNG PEOPLE**
- **BUILD CONFIDENCE & INDEPENDENCE**
- **FIND OUT MORE ABOUT YOUR SKILLS & INTERESTS**
- **GAIN QUALIFICATIONS**
- **MORE FREEDOM, LESS RULES!**



Further education is for all students! You can usually find something to suit you, no matter your interests or your level of learning.

FURTHER EDUCATION

WHERE CAN I STUDY?

There are different providers of further education:

COLLEGE

Colleges offer a wide range of courses to suit lots of different learners

SIXTH FORM

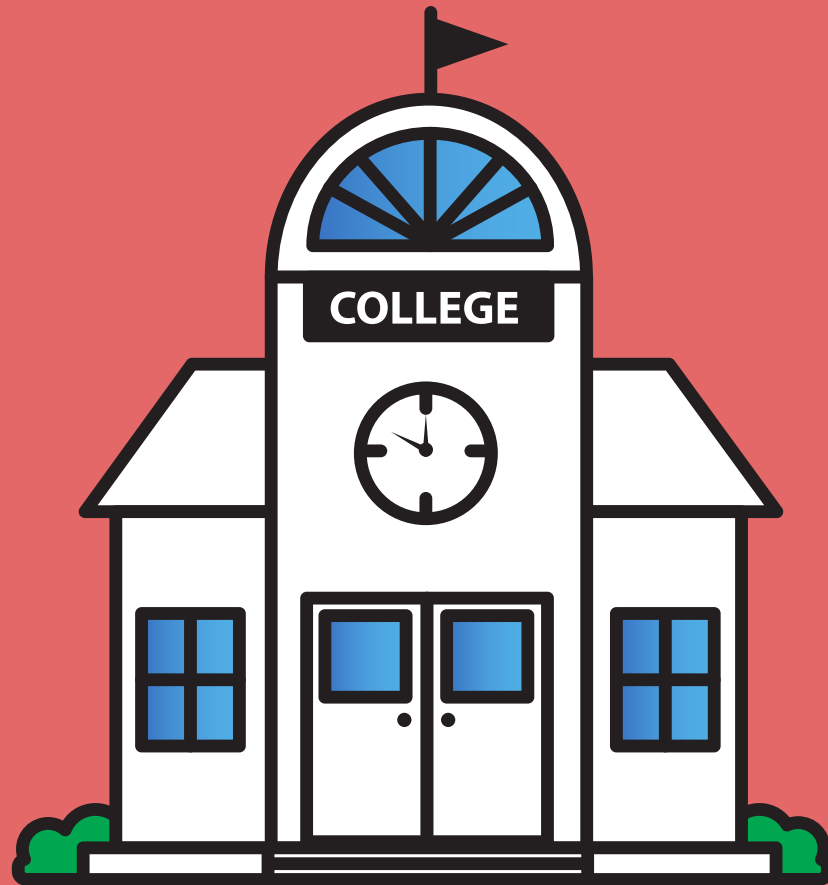
Sixth forms are usually attached to schools, and prepare students for university. There is usually a focus on theory-based learning in sixth form (but not always).

ALTERNATIVE PROVIDERS

Alternative providers offer something different to mainstream education. They are a valuable option for students who might not thrive in a school or college environment.

FURTHER EDUCATION

WHERE CAN I STUDY?



What is the right choice for you?

Consider:

- What kind of courses are on offer
- Your journey there
- The size of the college/provider
- What kind of support they offer

See all of the FE providers in East Sussex on the [Careers East Sussex Website](#).

FURTHER EDUCATION WHERE CAN I STUDY?

You can also check out our [interactive map](#):



FURTHER EDUCATION

HOW TO CHOOSE A COURSE?

Courses can be academic, vocational or a mixture of both.
Which do you think would suit you best?

ACADEMIC

Academic courses usually...

- involve lots of reading/writing
- can lead to further study, including university
- involve more exams and less coursework
- are taught in the classroom



VOCATIONAL

Vocational courses usually...

- involve hands-on learning
- relate to a specific job type
- involve more coursework and fewer exams
- are taught in practical settings and often include work experience or placements



FURTHER EDUCATION LEVELS OF LEARNING

There are different levels of learning. Which level is right for you?

Educational Level	What it means...
Entry Levels 1, 2 & 3	Core skills to help prepare for Levels 1 and up.
Level 1	Introductory courses for people who are ready to start learning in their chosen area.
Level 2	Intermediate learning. GCSEs are examples of Level 2 qualifications.
Level 3	Advanced learning. A levels, T-Levels and many vocational courses are Level 3 qualifications.

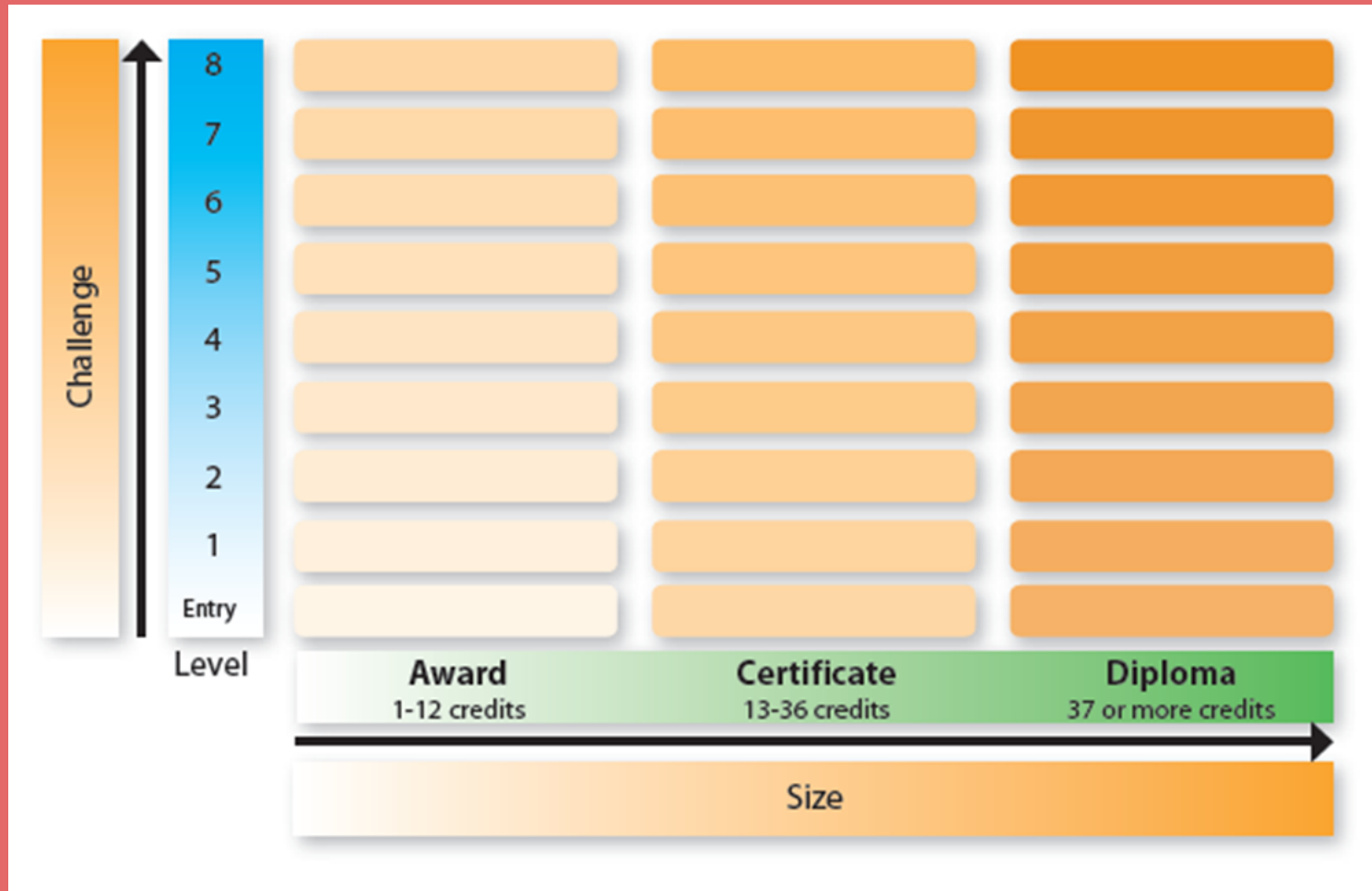
FURTHER EDUCATION ENTRY REQUIREMENTS

'Entry requirements' are the qualifications you need to get onto a specific course. You will need to research individual colleges and courses for more details.

Educational Level	Example Course(s)	Example Entry Requirements
Entry Level 1, 2 and 3	Entry Level Functional Skills in Maths	No entry requirements
Level 1	Foundation Construction Skills Level 1	No entry requirements
Level 2	Health and Social Care Level 2	Complete the Level 1 course OR 4 x GCSEs at grades 3-9
Level 3	Digital T level	Complete the Level 2 course OR 5 x GCSEs at grades 4-9

FURTHER EDUCATION LEVELS OF LEARNING

You may also see different words like 'award', 'certificate' and 'diploma'.
These relate to the amount of time spent on the qualification rather than its difficulty.



(One credit is roughly ten hours of work).

FURTHER EDUCATION

WHAT CAN I STUDY?

There are lots of types of courses you can study. Which is right for you?

A-LEVEL

An A-Level is an academic qualification that is similar in style to GCSEs. A-Levels can prepare you for further study.

- Two years
- Level 3
- Mostly assessed through exams
- Study three A-Levels for full-time learning

T-LEVEL

A T-Level is a technical study programme. It is equivalent to three A-Levels and includes an industry placement that makes up 20% of the course. T-Levels are designed to give you the skills that employers need.

- Two years
- Level 3
- Assessed through exams, projects and practical assignments
- Study one T-Level for full time learning

FURTHER EDUCATION

WHAT CAN I STUDY?

VOCATIONAL QUALIFICATIONS

Vocational qualifications are courses that are related to a specific industry or role.

- Level 1 and upwards
- Mostly assessed through coursework, but courses vary
- Some courses are full time, others can be combined to create a full-time schedule

BTEC

BTEC courses are a common type of vocational qualification. They take their name from the Business and Technology Education Council (or BTEC for short). This is the awarding body for BTEC courses.

FURTHER EDUCATION

WHAT CAN I STUDY?

APPLIED QUALIFICATIONS

Applied qualifications prepare you for further study by combining academic learning with practical skills to give you a broad overview of working in a sector. An applied course is equivalent to three A-Levels.

- Level 3
- Assessed through exams or coursework
- Study one applied course for full time learning

ENTRY-LEVEL LEARNING

This includes courses and programmes for young people who have little or no previous experience or qualifications. Entry-level learning prepares you for further learning.

- Entry Level and Level 1
- Flexible and supported learning
- Learn soft skills as well as gaining qualifications

FURTHER EDUCATION

MATHS AND ENGLISH

If you have not already passed your Maths and English at school, you will need to study these as part of your further education.

You need to gain (or work towards) a grade 4 or above in GCSE Maths and English, or pass your Functional Skills at Level 2 or above.



These skills and qualifications are very valuable for your future. Not only do they look good on a CV when you apply for jobs, they will also help you in your personal and professional life.

FURTHER EDUCATION

HOW DO I CHOOSE MY PATH?

Which course would suit me?

Think about your favourite subjects at school and how you learn best. Are you more academic or more hands-on? Do you have a dream job, or want to explore new topics?

I don't have a future plan.

You don't need to have your future all planned out yet! College taster days give you an insight into courses and what you might enjoy. We also love the [Buzz Quiz](#), which suggests career ideas based on your personality type.

What if I don't get the grades?

All school-leavers are guaranteed a place in FE, so don't panic! Have a few ideas in mind, so that you are prepared for any outcome.

FURTHER EDUCATION

WHAT ARE UCAS POINTS?



If you want to go to university, you may need to consider the entry requirements for your chosen course.

Most Level 3 courses have a value attached to them, which is measured in UCAS points.

This is the system that universities use to create their entry requirements.

To explore university courses and to find out more about UCAS points, visit the [UCAS Website.](#)

FURTHER EDUCATION

WHEN DO I HAVE TO PAY FOR FE?

You get at least three years of FREE education after you finish school. This gives you a little extra time to change your mind if you need to.



If you are aged 19-23, you may be able to study towards your first Level 1, Level 2 or Level 3 qualification for free.

From Year 15, you can also study adult courses. Don't be put off by the cost, as you may be able to join for free. Contact providers to find out more.

FURTHER EDUCATION

WHAT SUPPORT CAN I GET?

Starting something new can be daunting, but there is lots of support available:

SEN SUPPORT

All providers should have a member of staff or a team dedicated to supporting students with SEN (special education needs). Contact YES or providers for more details.

FLEXIBLE CHOICES

Most providers allow a six week window at the start of year 12 for students to swap courses if they need to.



FURTHER EDUCATION

WHAT SUPPORT CAN I GET?

Starting something new can be daunting. There is usually lots of support available:



WELLBEING SUPPORT

All colleges will have a member of staff for you to chat to. Larger colleges may have a wellbeing team, or a space where you can go for support or quiet time.

FINANCIAL SUPPORT

Providers will usually be able to support you if you are struggling with money. You may be able to apply for a bursary, which helps with things like travel or equipment costs.

FURTHER EDUCATION IF IN DOUBT, ASK!

Your school or your YES adviser can support you to explore and apply for FE opportunities. Chat to them directly, or find out more below:

Follow us on social media:

[facebook.com/YESEastSussex](https://www.facebook.com/YESEastSussex)
[instagram.com/YESEastSussex](https://www.instagram.com/YESEastSussex)

Call us:

Eastbourne: 01323 368390
Hastings: 01424 311890

Or check out our website and resource page:

www.cxk.org/services/youth-employability-service-yes
www.cxk.org/resources/resources-for-young-people-in-east-sussex

Not sure if you have a YES Adviser?

If you are aged between 16-18 and live in East Sussex, we can most likely help. Get in touch via one of the methods above for more information.

